

# WILTSHIRE

---

## Drugs and Alcohol Strategy

2019-2022



Reducing harm caused by drugs and alcohol, to improve healthier outcomes for Wiltshire's communities

# The relationship with drugs and alcohol remains complex, and the challenges posed cannot be addressed by any one agency or individual alone

## Introduction

The harms caused by drugs and alcohol are extensive and impact all our communities and continue to place extensive pressures on many public services. This strategy reflects that substance misuse spans the life course and is based upon the [Wiltshire Substance Misuse Health Needs Assessment](#).

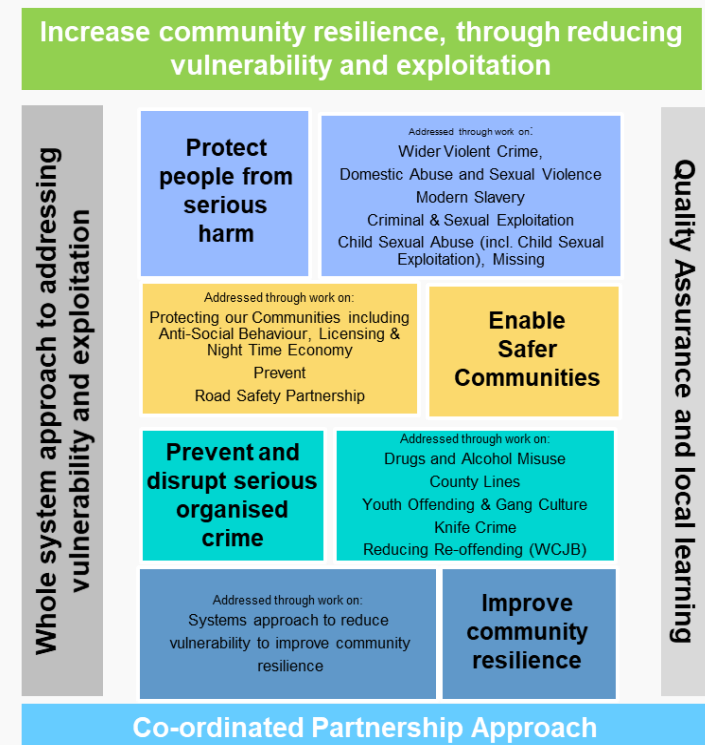
## This strategy will:

- Join up our approaches to prevention, early help and supporting those who are most vulnerable, working across the lifecourse
- Focus on the young person's transition to adulthood reducing the risks for disengagement
- Support the delivery of dedicated treatment services across the lifecourse which focus on prevention, accessibility, collaboration and treatment
- Raise awareness of harm reduction and recovery in relation to substance misuse in Wiltshire

## The Vision

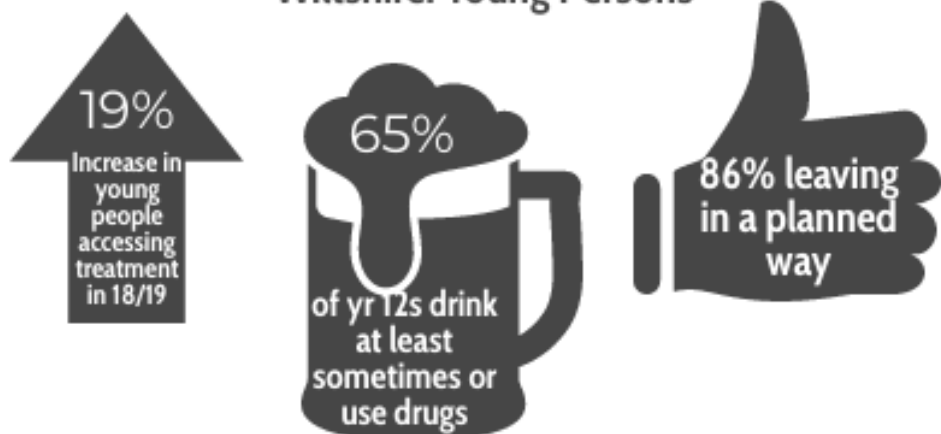
**To work collaboratively to reduce the impact and harms caused by drugs and alcohol on individuals and the wider community**

The drugs and alcohol strategy supports the Wiltshire Community Safety Partnership to fulfil its strategic objectives:

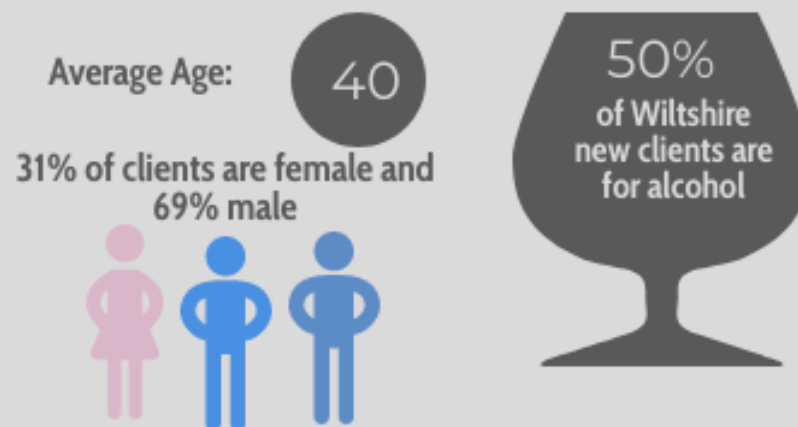


# Wiltshire Drug and Alcohol Strategy 2019-2022: Key Statistics

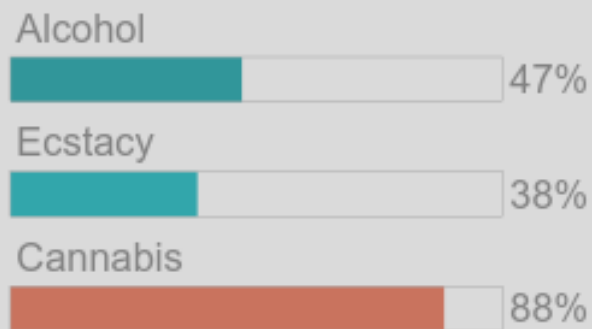
## Wiltshire: Young Persons



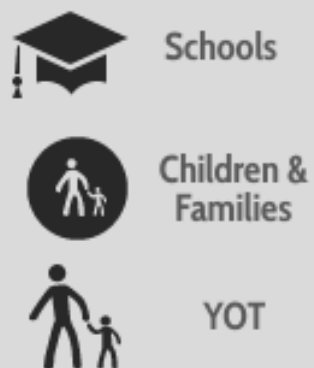
## Wiltshire: Adults



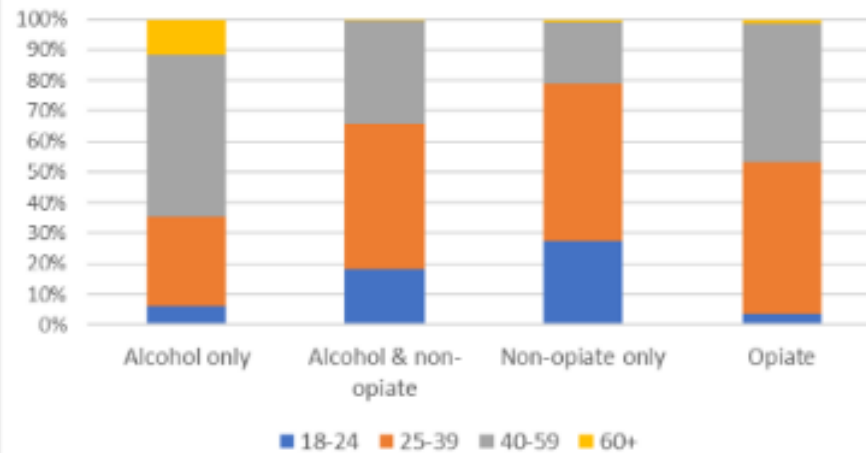
## Substance on referral



## Top 3 referral sources:



## Age distribution by substance category



# What are the challenges

## Prevention

- 50% of referrals to the Substance Misuse service are for alcohol. National modelling\* suggests that 1 in 3 people in Wiltshire are drinking at increasing risk but local data\*\* found this could be nearer 1 in 2.
- Across both adult and young peoples drug and alcohol services in Wiltshire, we found that the average age of first use was 15-19 years old. Local schools data also shows that 65% of 17-18 year olds sometimes use drugs or drink alcohol.

## Under-represented Populations

- Wiltshire gender split in service reflects national trends with just 1 in 3 clients being female.
- National modelling and local data both suggest that there is unmet need for drug use for 20-24 and alcohol use for 60+.



## Working Together

- Within Wiltshire's treatment population 58% have a mental health issue. When nationally just 1 in 6 people experienced a mental health issues in the last week.

## Service Delivery

- Wiltshire is currently in the 1st quartile for performance of successful completions for Opiate and in the second for alcohol and non opiate categories. It is vital that this performance is maintained and built upon.

# Strategic Priorities

---

Outcomes	Aims
<b>Prevention</b> Focusing on harm reduction awareness and early help, to reduce the need for service intervention	<ul style="list-style-type: none"><li>• Reduce the amount of alcohol consumption* in Wiltshire</li><li>• Increase harm reduction messaging for all substance misuse across the life course</li></ul>
<b>Under-represented Populations</b> Breaking down barriers to ensure services are available to all, whatever their circumstances	<ul style="list-style-type: none"><li>• Increase referrals from females and older adults accessing substance misuse services</li><li>• Improve service accessibility for those transitioning from young people to adult services, military, LGBT and other minority groups</li></ul>
<b>Working Together</b> Communities and agencies working together to reduce the harms caused by drugs and alcohol	<ul style="list-style-type: none"><li>• Improve the dual-diagnosis pathways of support for those with a mental health issue</li><li>• Increase timely referrals to both young people and adults substance misuse services from all partners</li></ul>
<b>Service Delivery</b> Ensuring services are performing well and promote long term sustained recovery	<ul style="list-style-type: none"><li>• Deliver services based on local needs and demands of the service user, to sustain top quartile for performance for substance misuse services</li></ul>

\*Alcohol misuse in Wiltshire has a greater prevalence than drugs misuse

Therefore, Wiltshire strategic focus will be on reducing alcohol misuse

# The key to making sure this strategy has a real impact on improving people's lives, is an action plan accurately reflecting the aims and principles of this strategy

## **Role and Function**

---

To support the Wiltshire Community Safety Partnerships strategic objectives to:

- Embed a whole-systems approach to vulnerability and exploitation, addressing root causes across the life course, focused on prevention in the context of 'place' to support communities to be stronger and more resilient.
- Reducing the crimes and behaviours that cause the most harm, focusing on prevention and earlier intervention.
- Enable cohesive and active communities, who are better informed, to work together to reduce the impact of low-level criminality and anti-social behaviour.
- Reduce the impact of organised criminality, often associated with drugs, and the harms caused

## **Delivery Framework**

---

An implementation plan will be monitored by the multi-agency Wiltshire Drugs and Alcohol Strategic group. Targeted work will be driven through task and finish groups.

## **Principles**

---

As we work to make this vision a reality, all partners have agreed to the following four principles:

- Build Services around the need of the service user, their families and the wider community
- Focus on areas of demographic and geographic need
- Work in partnership to make the best use of all resources in our communities
- Share appropriate information for the benefit of service design and service user support.